



Property Services

Rownhams St John's (CE) Primary School

Rownhams Expansion to 1.5FE Proposed Site & Building Plans

- Key:
- a Rownham St John Church of England Primary School
 - b Horns Drove Community Pre-School

- | | | |
|--------------|-----|---------------------------------------|
| Non-Teaching | [] | 1. Reception & Waiting |
| | | 2. General Office |
| | | 3. Head Teacher |
| | | 4. Staff Room |
| | | 5. WCs |
| | | 6. Kitchen & Servery |
| | | 7. Plant & Non-teaching Stores |
| | | 8. Hall |
| | | 9. Classrooms - Reception |
| | | 10. Classrooms - Key Stage 1&2 |
| | | 11. Learning Resource / Library |
| | | 12. Specialist Practical |
| | | 13. Studio/ Small Hall/ Music & Drama |
| | | 14. Small Group Room (SEN) |
| | | 15. ICT Suite |
| Teaching | [] | 16. Car Park |
| | | 17. Games Court |
| | | 18. Hard Play |
| | | 19. Soft Play |
| | | 20. Habitat |
| | | 21. Pitch |

- General Teaching - New Build
- General Teaching - Refurbishment.
- Non-Teaching - New Build
- Non-Teaching - Refurbishment.
- Circulation

- Site Boundary
- ▶ Pedestrian Access
- ▶ Vehicular Access
- ▶ Contractor Access

© Crown Copyright and database rights 2017. All rights reserved. HCC 100019180.

Project Appraisal

Not to Scale

P11548 - A.100_Rev A

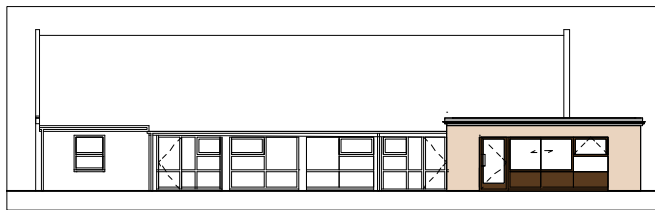
May 2017



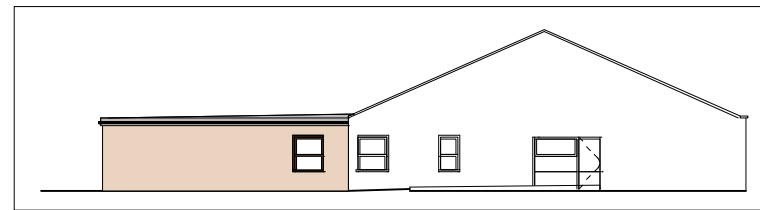
Existing Site Location Plan



Proposed Site Plan



Existing school
Proposed NorthWest Elevation



Proposed classroom
Existing school
Proposed SouthWest Elevation